



**EMPOWERING YOU TO  
TAKE ACTION NOW!**

**Learning Differences & Mental Health**

**Crowne Plaza Atlanta SW**

**Peachtree City, GA**

**February 3, 2023**

**8:30 am – 5:00 pm**

**Presented By:**





## General Disclosure

The 7<sup>th</sup> Annual Symposium 2023 & Special Needs Expo provides an educational opportunity and up to date information for individuals, families caring for a child with special needs as well as for educators and healthcare professionals in the south metro Atlanta area. The Symposium offers a variety of lectures to raise awareness and learn more about the resources available to those living with disabilities and special needs. The contents presented in this educational venue are those of the speakers, panelists, and moderators. The views expressed in presentations made at the Southside Support Symposium are those of the speakers, panelists, and moderators and not, necessarily, of Southside Support Inc. Presentation at Southside Support Inc. events, or the presence of vendors at Southside Support Inc. events, does not constitute an endorsement of the vendors or speakers' views, products, or services.

Attendees are here by advised to seek appropriate services or medical attention to further discuss their individual concerns and seek appropriate solutions.

### **MISSION**

To connect families of children with special needs and individuals living with disabilities in south metro Atlanta with valuable resources in our community and with each other. We do this through education, training, support, and inclusion opportunities, making our local communities more accessible to our otherly-abled population.



## Board Of Directors



Kay McInroe  
President



Nick Ferrante  
Vice President



Matt Griffin  
Treasurer

Chief Janet Moon  
Board Member



Mike Martin  
Board Member



Steve Ivory  
Board Member





## Symposium Committee

Dr. Angeline Dy  
Chairperson

Jacinda Thomsen  
Co-Chairperson

Patty Gullick  
Past-Chairperson

Kay McInroe  
President

Nick Ferrante  
Vice-President

Mike Martin  
Board Member

Matt Griffin  
Board Member

Sandrine Neely  
Volunteer

Sarah Hinson  
Volunteer



## Volunteers

**Thank you to all our volunteers!**

### **Clayton State University Students**

Jillian Coyle

Alfredo Fonseca

Phylicia Lakes

Kelly Lawrence

Temisan Nicholl

Breonna Simmons

---

Jimmy Dunnavant

Photography

Jose and Son

Videography

Special thanks to our families, friends, and staff  
for their support and helping hands.



## Speakers & Panelists



### **Suvrat Bhargave, M.D.**

Board-certified psychiatrist, specializing in child and adolescent psychiatry. A distinguished educator and speaker on topics related to personal growth, effective parenting, and mental health conditions.

### **Marcus L. Broadhead, Ed.D**

Author/transformational Speaker/Mentor/Leadership Developer  
He has served in educational leadership with over 20 years of experience as an educator.



### **Dana Black, RWP**

Constantly Varied Nutrition  
Board certified Holistic Health Practitioner.  
[www.constantlyvariednutrition.com](http://www.constantlyvariednutrition.com)

### **Christy E. Calbos, Esq.**

Calbos Law Firm  
Special Education Law for Children  
[www.calboslaw.com](http://www.calboslaw.com)

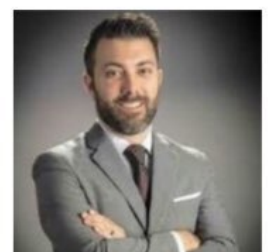


### **Paul Cohen, Ph.D.**

Sandy Springs Psychological Center, P.C.  
Children, Adolescent, & Family counseling  
[www.paulcohenpsychology.com](http://www.paulcohenpsychology.com)

### **Philip Crane, D.C.**

Sentinel Health and Wellness  
Applied Kinesiologist and Chiropractor  
[www.sentinelptc.com](http://www.sentinelptc.com)





## Speakers & Panelists



### **Georgia Fruechtenicht**

Special Education Parent Mentor - Coweta County Schools  
Certified Sanity School Trainer

### **Abbie Huber**

Better Story Tutoring and Social Thinking Services  
Educational Specialist, Emotional Coordinator,  
Associate & Admission director, Teacher



### **DJ Jeyaram, Esq**

Special Needs & Estate Planning Attorney  
Judge of Gwinnett County Magistrate Court  
[www.jeylaw.com](http://www.jeylaw.com) (Presenting Sponsor)

### **Natalie Generally Kirk, MMed**

Small Steps Music, LLC  
Board certified music therapist & teacher  
[www.smallstepsmusicllc.com](http://www.smallstepsmusicllc.com)



### **Natalie Kohlhaas, LPC**

Serenity Treehouse, LLC  
Anxiety & trauma specialist for adults & adolescents  
[www.serenitytreehouse.com](http://www.serenitytreehouse.com)

### **Matthew Levy, PSY.D**

Sandy Springs Psychological Center, P.C.  
Child, Adolescent, and Family Psychology  
[www.mattlevypsyd.com](http://www.mattlevypsyd.com)



### **Michele O'Connell**

Sleepless Ladies Chit-Chat Group  
Motivational Speaker, Blogger, Influencer  
Baker – Gluten-free and dairy free desserts



## Speakers & Panelists



**Tara Mulvany, M.O.T.**  
Interactiv Children's Therapy  
Occupational Therapist  
[www.ictsonline.com](http://www.ictsonline.com)

**Alfonso Martinez, Ph.D.**

The Neuropsychology Center  
Evaluation, counseling, & psychotherapy  
[www.theneuropsychologycenter.com](http://www.theneuropsychologycenter.com)



**Avril James Maynard, MPH**  
Piedmont Heart Institute  
Certified Health Education Specialist  
Ordained interfaith minister, yoga teacher

**Megan McLain, DPT & Ashley Irvin**

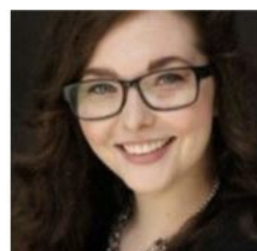
Intuitive Choice Physical Therapy & Wellness  
A holistic physical therapy with mobile services  
<https://intuitivechoicapt.com/>



**Pam Reid**  
FLOW Consulting and Coaching  
Author, Podcaster, Founder of FLOW  
<https://www.pamreidtheflowboss.com/>

**Leah Robilotto, M.A. Psy.**

Robilotto Wellness  
Stress, Anxiety, & Food allergy management  
[www.robilottowellness.com](http://www.robilottowellness.com)



**Katie Robinson, Ph.D.**  
Adolescent & Children therapy & psychological  
assessment.  
Registered drama and creative arts therapist





## Speakers & Panelists



### **Sarah Ruiz**

Sweet Tea Yoga  
Certified RYT200

[www.swwetteayoga.com/sarah-ruiz](http://www.swwetteayoga.com/sarah-ruiz)

### **Ericka D. Smith**

Childhood education advocate  
Founder of Define Me / Transcending  
Learning Differences



### **Kyler E. Smith - AKA Slime Master K**

Author, Speaker, and outspoken advocate for  
children with learning differences  
Author of "I Define Me"

### **Brandi Tanner, Ph.D.**

Lightway Psychological Services  
Nationally certified school psychologist  
[www.lightwaypsych.com/brandi-tanner-phd](http://www.lightwaypsych.com/brandi-tanner-phd)



### **Lori Whitney**

Hoping Forward/Able to Serve  
Offers day program for adults with disabilities.  
[www.linkedin.com/in/lori-whitney-b5b082108](http://www.linkedin.com/in/lori-whitney-b5b082108)

### **Kim Whitnig Weinreb**

Transitionally Speaking, LLC  
Disability advocate/Educational consultant  
[www.transitionallyspeaking.com/](http://www.transitionallyspeaking.com/)



### **Marianne Young**

Exceptional Advocacy Services  
Special Education Advocate  
<https://www.exceptionaladvocacyservices.com/>



## Program Schedule

<b>8:00am – 8:30am</b>	<b>Registration &amp; Breakfast</b>
<b>8:30am – 9:30 am</b>	<b>SESSION ONE</b>
<b>Room A</b>	<b>Advocacy Panel</b>
Moderator	Sandrine Neely
Speakers	Marianne Young, Georgia Fruechtenicht, Dr. Brandi Tanner
<b>Room B</b>	<b>Emotional Health</b>
Moderator	Patty Gullick
Speaker	Natalie Kohlhaas
<b>Room C</b>	<b>How to Get a Quality Education</b>
Moderator	Jacinda Thomsen
Speakers	Dr. Paul Cohen, Dr. Matthew Levy, Dr. Katie Robinson
<b>9:30am – 9:45am</b>	<b>Networking Break/Exhibit Hall</b>



**Jeyaram**  
& Associates  
Wills, Trusts & Estate Planning

**Presenting Sponsor**



## Program Schedule

**9:45am – 10:45am**

### **SESSION TWO**

#### **Room A**

#### **Special Needs Estate Planning: Protecting Your Child's Benefits and Planning for the Future**

Moderator

Xernona Fortson/Jacinda Thomsen

Speaker

DJ Jeyaram, Esq.

#### **Room B**

#### **Stopping the Stigma and Recognizing Learning Differences Early**

Moderator

Sarah Salter

Speaker

Ericka Danielle Smith and Kyler Eric Smith

#### **Room C**

#### **504, IEP, and Mental Health**

Moderator

Sandrine Neely

Speaker

Christy Calbos

**10:45am – 11:00am**

#### **Networking Break/Exhibit Hall**

**11:00am – 12:30pm**

#### **Welcome/Introduction**

#### **Room A**

#### **Keynote Speaker Presentation**

#### **ADHD and Anxiety**

Moderator

Kay McInroe

Speaker

Dr. Suvrat Bhargave



## Program Schedule

**12:30pm-1:30pm**

**Lunch and Learn**

**Room A**

**Table Talk Topics**

Moderator

Kay McInroe/Dr. Angeline Dy

**Table 1**

**EIP, IEP, & 504s, Oh My!**

Lead(s)

Georgia Fruechtenicht

**Table 2**

**Learning Differences**

Lead(s)

Patty Gullick/Jacinda Thomsen

**Table 3**

**College Bound**

Lead(s)

Mike and Susan Martin

**Table 4**

**Future Planning & Workforce Development**

Lead(s)

Parallel – Dr. Dana Zavatkay

**Table 5**

**Special Needs Trusts**

Lead(s)

DJ Jeyaram & Associates

**Table 6**

**Stand up Shout Out**

Lead(s)

Sandrine Neely, Maggie Gullick

**Table 7**

**Talk to a neuropsychologist**

Lead(s)

Dr. Alfonso Martinez

**Table 8**

**Community Resources**

Lead(s)

Lori Whitney



## Program Schedule

<b>Table 9</b>	Budget Friendly/Self-Care
Lead(s)	Michele Lawton O'Connell
<b>Table 10</b>	Adult Transitions
Lead(s)	Kim Whitnig Weinreb
<b>1:30pm-1:45pm</b>	<b>Networking Break/Exhibit Hall</b>
<b>1:45pm – 2:45pm</b>	<b>Session THREE</b>
<b>Room A</b>	<b>Self-Care Panel</b>
Moderator	Sandrine Neely
Speakers	Dana Black, Dr. Megan McLain, Ashley Irvin, Dr. Philip J. Crane, Avril James, Sarah Ruiz
<b>Room B</b>	<b>Transitioning to Adult Services &amp; Support</b>
Moderator	Patty Gullick
Speaker	Kim Whitnig Weinreb
<b>Room C</b>	<b>Stress &amp; Coping</b>
Moderator	Xernona Fortson
Speaker	Pam Reid
<b>2:45pm - 3:00pm</b>	<b>Networking Break/Exhibit Hall</b>

***Please visit our sponsors!***



## Program Schedule

**3:00pm – 4:00pm**

### **Session FOUR**

#### **Room A**

#### **Alternative Therapies Panel**

Moderator

Jacinda Thomsen

Speakers

Abbie Huber, Dr. Tara Mulvany,  
Natalie Generally Kirk

#### **Room B**

#### **Becoming Enough / School Relationships**

Moderator

Sandrine Neely/Patty Gullick

Speaker

Dr. Marcus L. Broadhead

#### **Room C**

#### **The Challenges of Caregiving & Ways to Cope**

Moderator

Sarah Salter

Speaker

Leah Robilotto

**4:00pm – 4:30pm**

### **Closing Remarks & Adjournment**

#### **Room A**

Awards/Raffle

Moderator(s)

Kay McInroe / Jacinda Thomsen

Patty Gullick / Dr. Angeline Dy

*You must be present to win a prize!*

Oldenburg & Stiner, P.C.

**Presenting Sponsor**



## Sponsors



the campus®  
think. learn. grow.



Exceptional Advocacy  
Services



the  
neuropsychology  
center

neuropsychology • psychotherapy • counseling





## Sponsors







## Vendors



**Brain Balance®**

**parallel**



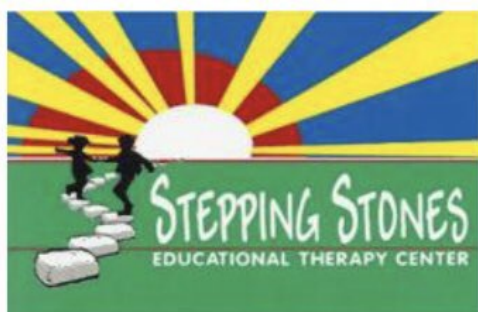
The  
**Bedford  
School**

*For Children With Learning Differences*





## Sponsors





## Sponsors



Peachtree City  
Therapeutic Massage



On behalf of Southside Support's Board of Directors and the 2023 Symposium Committee, thank you again for attending Southside Support's 7<sup>th</sup> Annual Symposium 2023 & Special Needs Expo.

Watch for announcements of upcoming events and programs.

Please visit us at [www.southsidesupport.org](http://www.southsidesupport.org)



**Donate**

